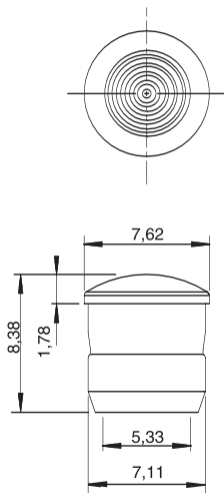


5 mm LEDs Panel Lenses



Dimensions in mm (typical)

Code	Color
KPAN052A	Amber Transparent
KPAN052B	Blue Transparent
KPAN052C	Clear Transparent
KPAN052G	Green Transparent
KPAN052R	Red Transparent
KPAN052Y	Yellow Transparent

Hole panel: 7,11 mm 

Panel Thickness: 2,67 mm max

LEDs: 5 mm standard