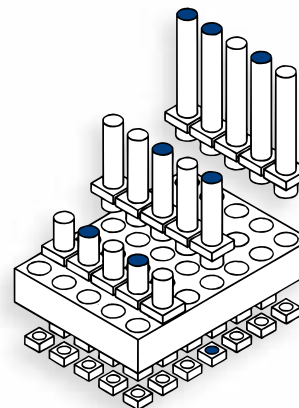
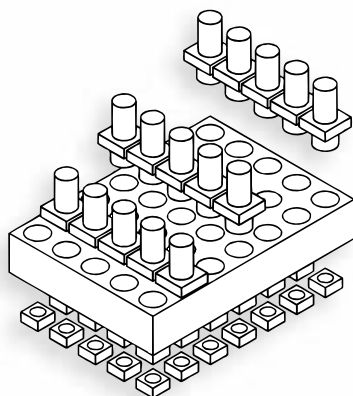


FEATURES

- ▶ Helps to eliminate mixed technology PCB processing
- ▶ Excellent on/off contrast
- ▶ Choice of 9 bright colors
- ▶ Optical Cable Version
- ▶ Easily mounted on PCB by press-fit
- ▶ Stackable vertically and horizontally
- ▶ Industry standard footprint

- ▶ Designed for low current operation
- ▶ Dominant wavelength from 430 nm to 700 nm
- ▶ LEDs color can be mixed in a single housing
- ▶ Reduce insertion cost
- ▶ Case in different colors
- ▶ Available in 19 lengths standard
- ▶ Custom version without cost

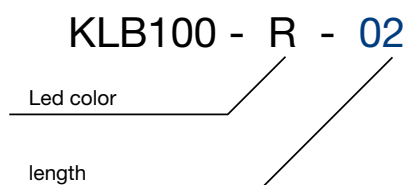


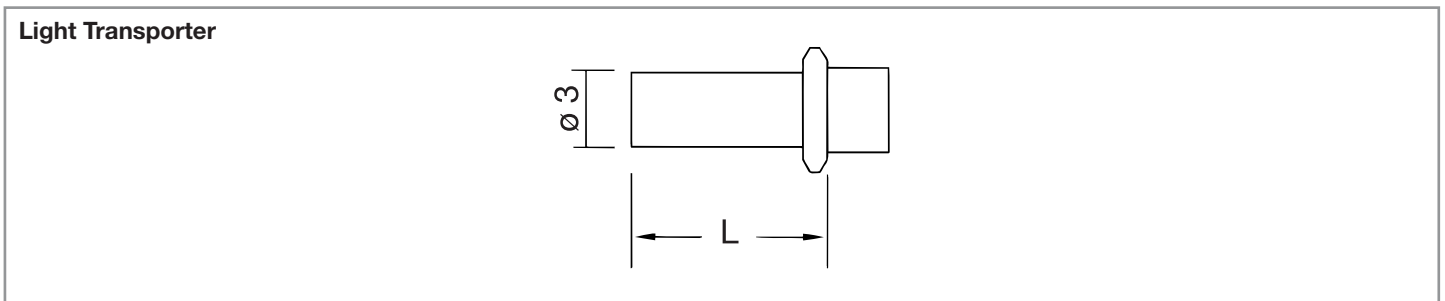
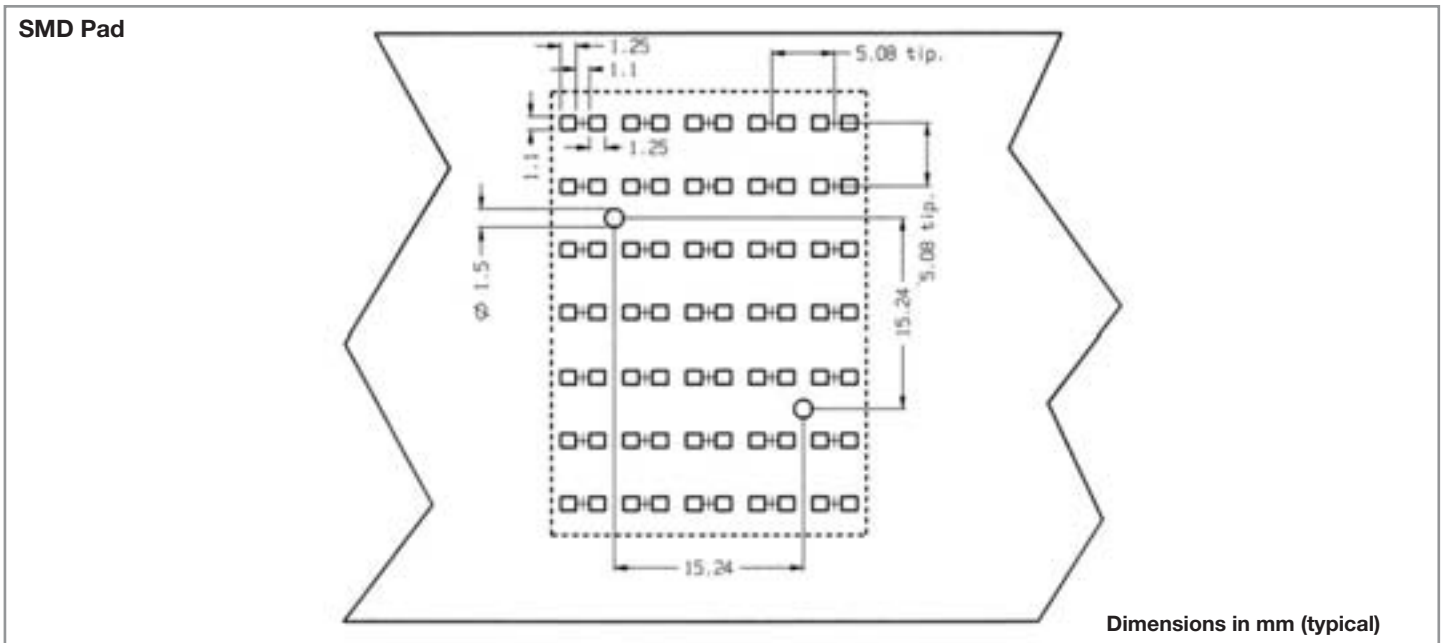
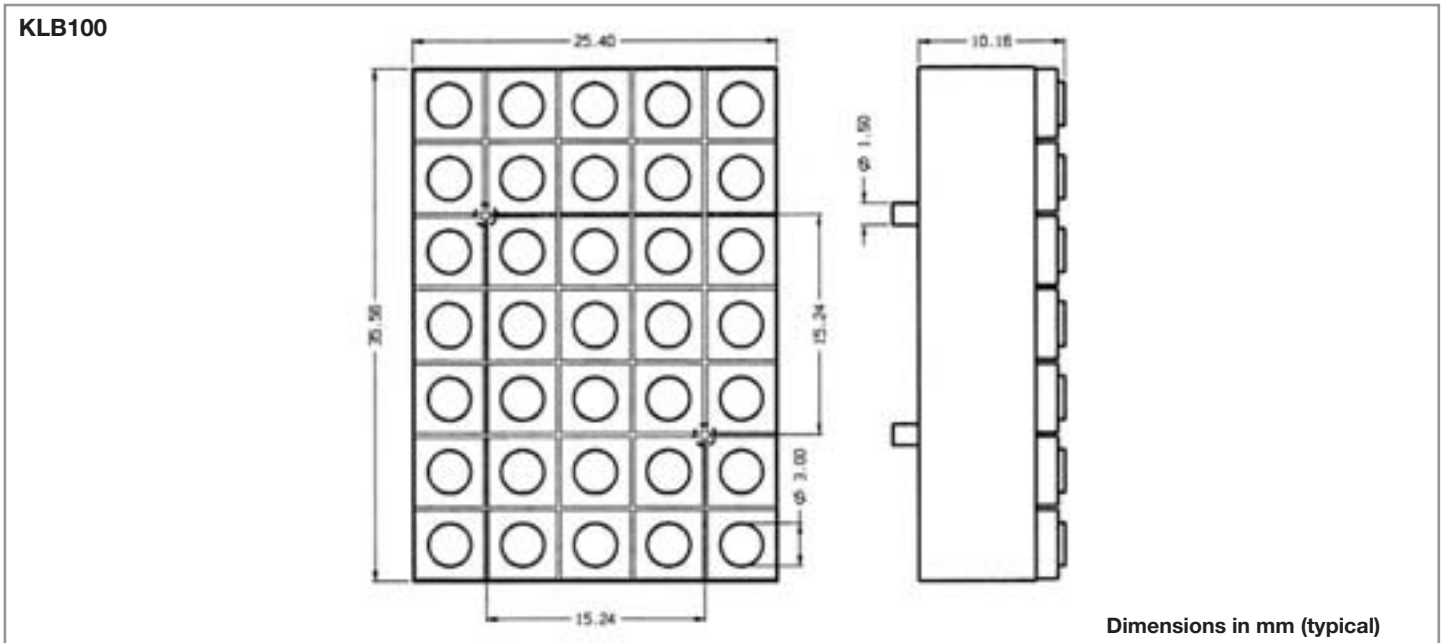
Code	Module Dimensions L x H x T (mm)	Effective Viewing (mm)	LEDs Q.ty	Led Color (nm) Typ.	Iv (mcd) Typ	IF (mA) Typ
SMD (0805)						
KLB100- R	35,56x25,40x8,16	ø 3x35led	35	Red 660	11,7	20
KLB100- O	35,56x25,40x8,16	ø 3x35led	35	Orange 605	3,7	20
KLB100- Y	35,56x25,40x8,16	ø 3x35led	35	Yellow 580	3,7	20
KLB100- YG	35,56x25,40x8,16	ø 3x35led	35	Yellow-Green 570	11,7	20
KLB100- G	35,56x25,40x8,16	ø 3x35led	35	Green 560	6,4	20
KLB100- PG	35,56x25,40x8,16	ø 3x35led	35	Pure-Green 555	2,7	20
KLB100- UG	35,56x25,40x8,16	ø 3x35led	35	Blue-Green 502	34	20
KLB100- U	35,56x25,40x8,16	ø 3x35led	35	Blu 467	14	20
KLB100- M	35,56x25,40x8,16	ø 3x35led	35	Multicolor	Indicate your colours	

Code	Length (mm)
LIGHT TRANSPORTER LENGTH	
02	L= 2 mm
04	L= 4 mm
054	L= 5,4 mm
06	L= 6 mm
085	L= 8,5 mm
10	L= 10 mm
13	L= 13 mm
15	L= 15 mm

Code	Length (mm)
LIGHT TRANSPORTER LENGTH	
17	L= 17 mm
20	L= 20 mm
30	L= 30 mm
37	L= 37,9mm
40	L= 40 mm
50	L= 50 mm
Your length	L=

PART NUMBER EXAMPLES





OPTIONS AVAILABLE

- ◆ Different Lengths & Shapes
- ◆ Special LEDs on request
- ◆ Bin Selection
- ◆ Ultrabright (from 300 to 1.900 mcd)
- ◆ Bicolor-Tricolor and Full Color
- ◆ 3,3 x 3,3 mm square version
- ◆ 5V & 12V Integrated Resistor

MATERIAL SPECIFICATION

- ◆ Housing: PC
- ◆ Lens: PC Optic
- ◆ Operating Temperature - 60° to + 125 °C
- ◆ Soldering Temperature: 260 °C ≤ 6 sec.
- ◆ Storage Temperature: -60° to + 125°C
- ◆ MTBF: 100.000 hours @ 20mA
250.000 hours @ 2mA
- ◆ Plastic Color & Material on Request

APPLICATIONS

- ◆ Moving Message Panel
- ◆ Restaurant drive-through sign
- ◆ Exchange Rate information board
- ◆ Movie Theatre signs
- ◆ Trains platform signs
- ◆ Fitness Equipment
- ◆ Medical Instruments
- ◆ Aeroportual platform signs