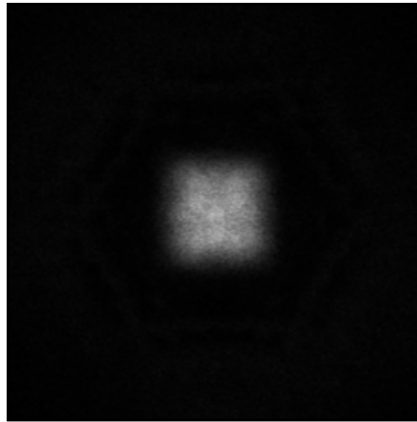
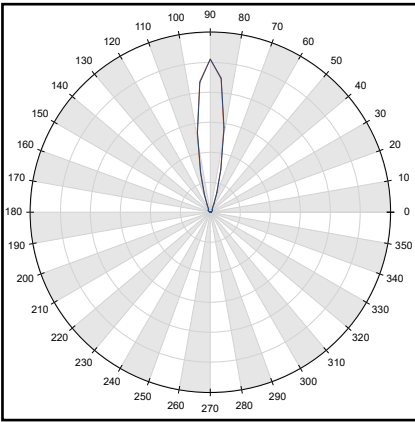
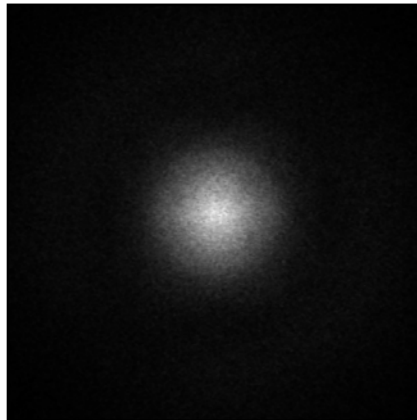
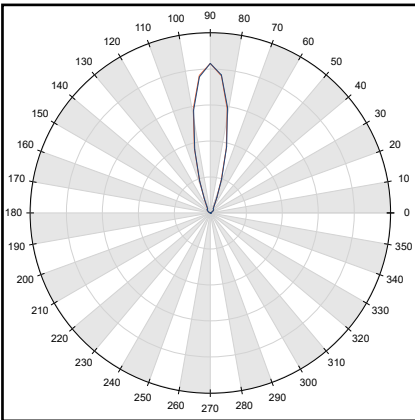


## 1. KESQ2145NASR - SEOUL® CUN9GB1A-UV CA3535 Series



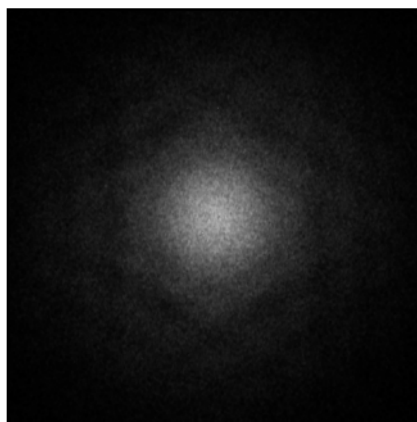
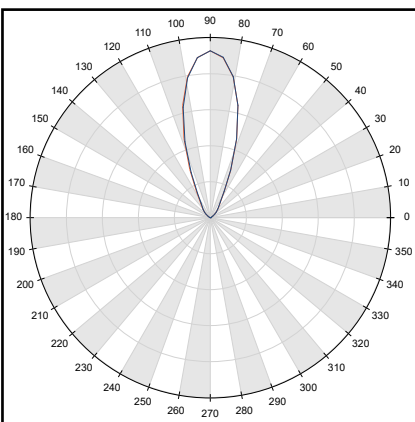
- Full angle C0-C180 at 50% from max: ~ 20.5°
- Full angle C0-C180 at 10% from max: ~ 31.7°
- The light spots here represented refer to tests carried out with ~ 1600mW@LED

## 1. KESQ2145MESR - SEOUL® CUN9GB1A-UV CA3535 Series



- Full angle C0-C180 at 50% from max: ~ 22.8°
- Full angle C0-C180 at 10% from max: ~ 24.9°
- The light spots here represented refer to tests carried out with ~ 1600mW@LED

## 1. KESQ2145WISR - SEOUL® CUN9GB1A-UV CA3535 Series



- Full angle C0-C180 at 50% from max: ~ 30.5°
- Full angle C0-C180 at 10% from max: ~ 91.2°
- The light spots here represented refer to tests carried out with ~ 1600mW@LED