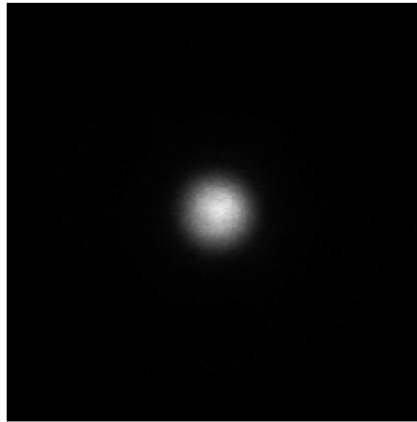
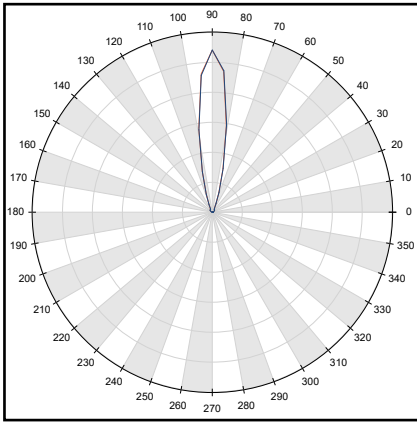
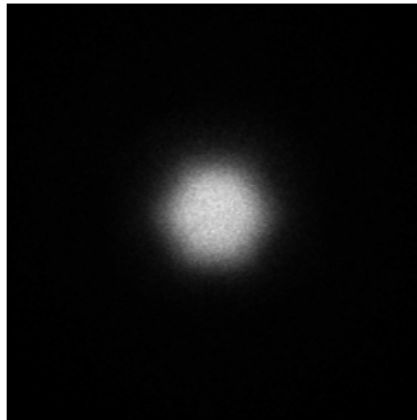
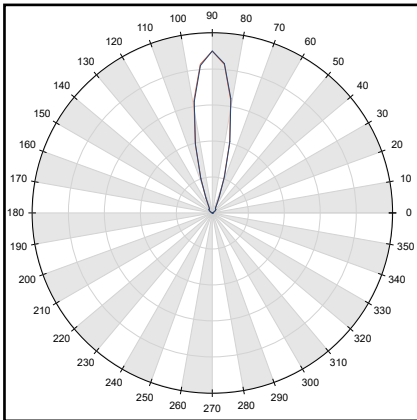


## 1. KESQ2145NASR - SEOUL® CUN86B1B-UV nZ5 Series



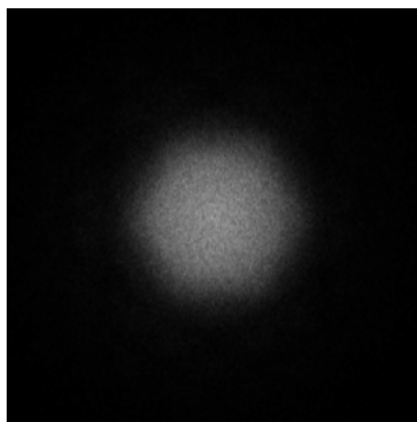
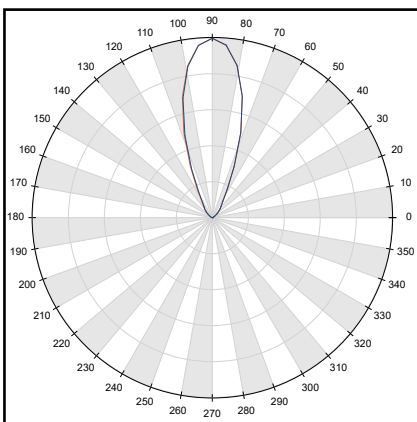
- Full angle C0-C180 at 50% from max: ~ 8.1°
- Full angle C0-C180 at 10% from max: ~ 18.0°
- The light spots here represented refer to tests carried out with ~ 1200mW@LED

## 1. KESQ2145MESR - SEOUL® CUN86B1B-UV nZ5 Series



- Full angle C0-C180 at 50% from max: ~ 25.4°
- Full angle C0-C180 at 10% from max: ~ 39.5°
- The light spots here represented refer to tests carried out with ~ 1200mW@LED

## 1. KESQ2145WISR - SEOUL® CUN86B1B-UV nZ5 Series



- Full angle C0-C180 at 50% from max: ~ 38.9°
- Full angle C0-C180 at 10% from max: ~ 58.3°
- The light spots here represented refer to tests carried out with ~ 1200mW@LED