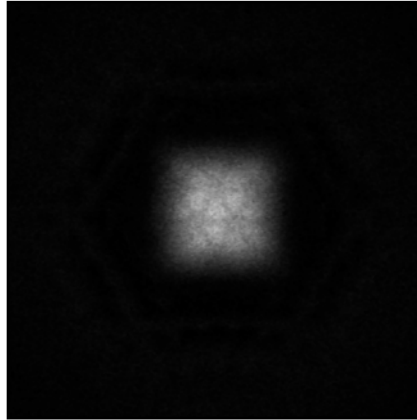
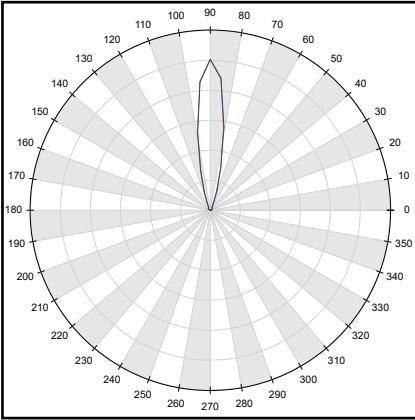
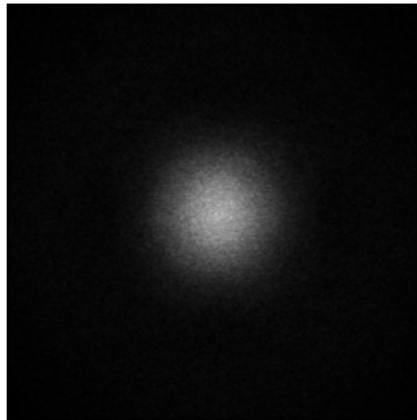
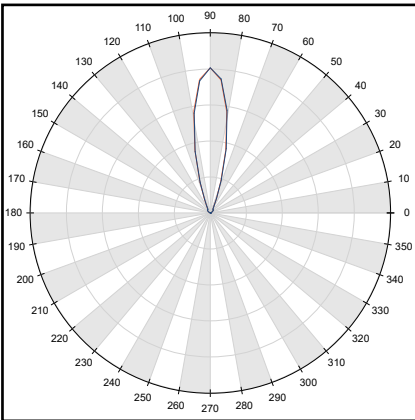


## 1. KESQ2145NASR - SEOUL® CUN6GB1A-UV CA3535 Series



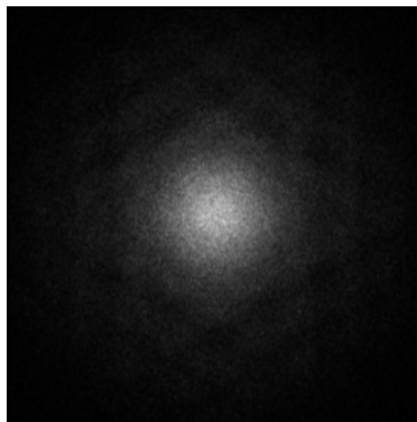
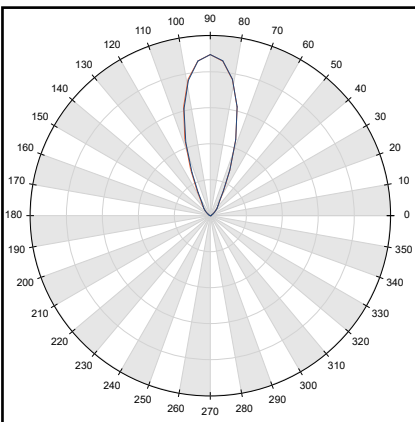
- Full angle C0-C180 at 50% from max: ~ 21.5°
- Full angle C0-C180 at 10% from max: ~ 34.0°
- The light spots here represented refer to tests carried out with ~ 1400mW@LED

## 1. KESQ2145MESR - SEOUL® CUN6GB1A-UV CA3535 Series



- Full angle C0-C180 at 50% from max: ~ 25.2°
- Full angle C0-C180 at 10% from max: ~ 69.0°
- The light spots here represented refer to tests carried out with ~ 1400mW@LED

## 1. KESQ2145WISR - SEOUL® CUN6GB1A-UV CA3535 Series



- Full angle C0-C180 at 50% from max: ~ 28.2°
- Full angle C0-C180 at 10% from max: ~ 89.6°
- The light spots here represented refer to tests carried out with ~ 1400mW@LED