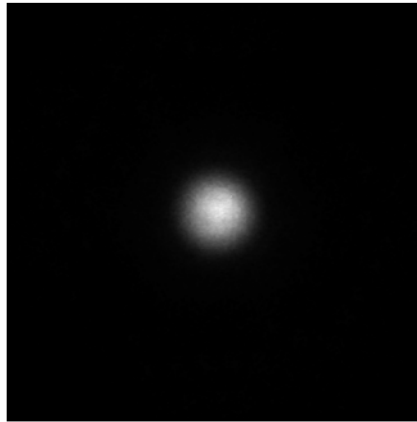
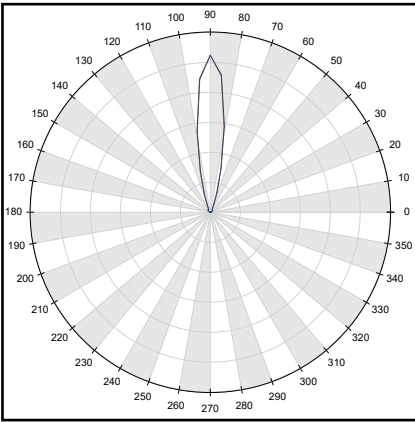
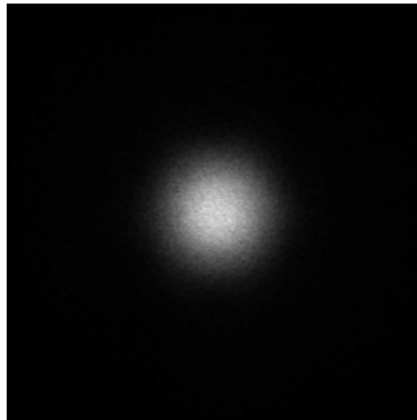
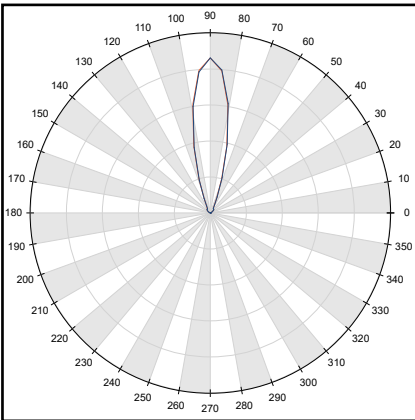


## 1. KESQ2145NASR - SEOUL® CUN66A1B-UV Z5 Series



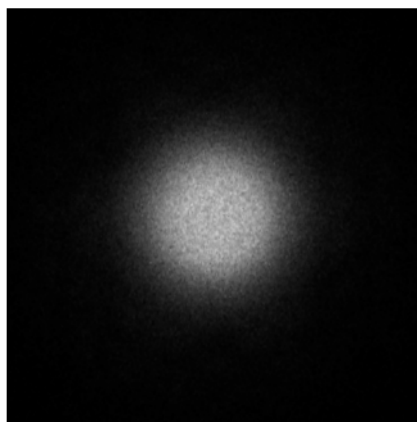
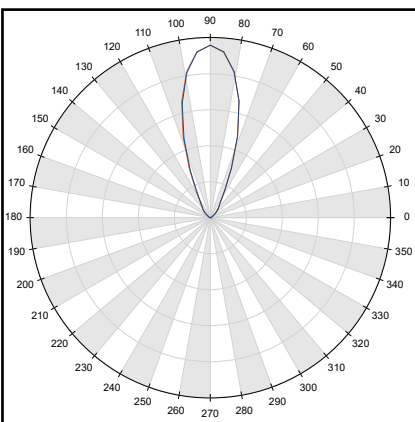
- Full angle C0-C180 at 50% from max: ~ 12.4°
- Full angle C0-C180 at 10% from max: ~ 22.6°
- The light spots here represented refer to tests carried out with ~ 990mW@LED

## 1. KESQ2145MESR - SEOUL® CUN66A1B-UV Z5 Series



- Full angle C0-C180 at 50% from max: ~ 23.2°
- Full angle C0-C180 at 10% from max: ~ 40.1°
- The light spots here represented refer to tests carried out with ~ 990mW@LED

## 1. KESQ2145WISR - SEOUL® CUN66A1B-UV Z5 Series



- Full angle C0-C180 at 50% from max: ~ 37.6°
- Full angle C0-C180 at 10% from max: ~ 61.0°
- The light spots here represented refer to tests carried out with ~ 990mW@LED