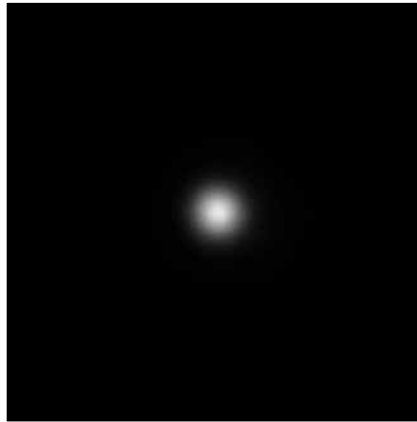
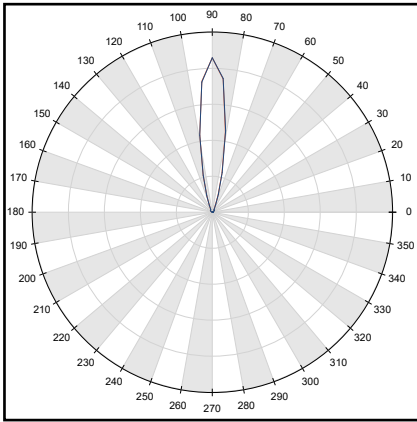
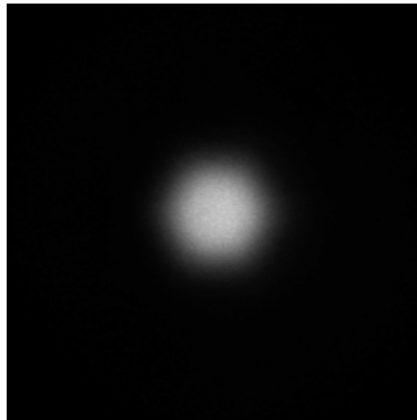
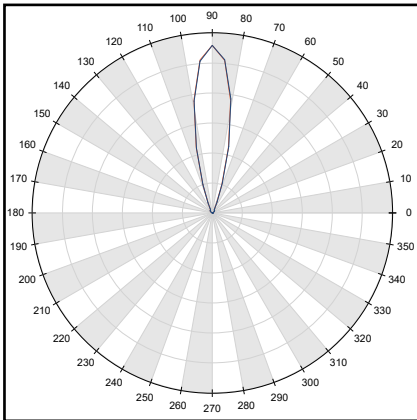


1. KESQ2145NASR - NICHIA® NVSU279A(U395)



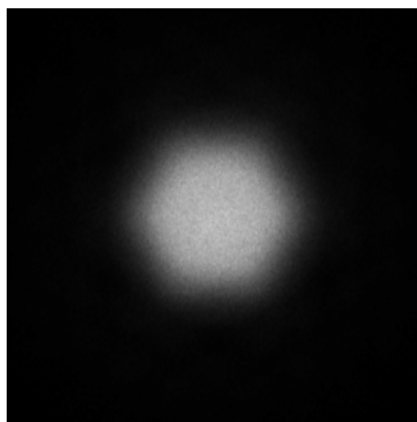
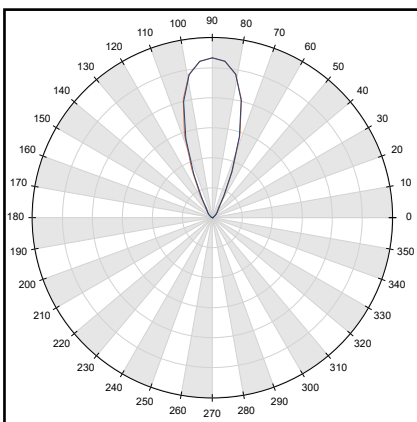
- Full angle C0-C180 at 50% from max: ~ 9.1°
- Full angle C0-C180 at 10% from max: ~ 18.6°
- The light spots here represented refer to tests carried out with ~ 1450mW@LED

1. KESQ2145MESR - NICHIA® NVSU279A(U395)



- Full angle C0-C180 at 50% from max: ~ 24.0°
- Full angle C0-C180 at 10% from max: ~ 37.5°
- The light spots here represented refer to tests carried out with ~ 1450mW@LED

1. KESQ2145WISR - NICHIA® NVSU279A(U395)



- Full angle C0-C180 at 50% from max: ~ 40.1°
- Full angle C0-C180 at 10% from max: ~ 57.4°
- The light spots here represented refer to tests carried out with ~ 1450mW@LED