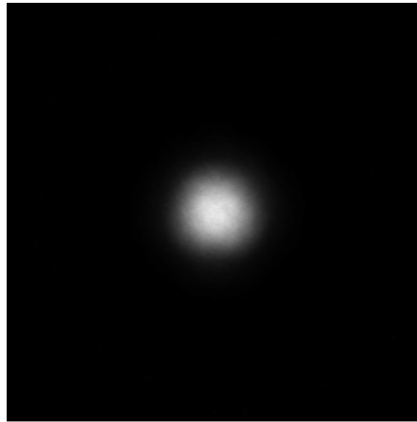
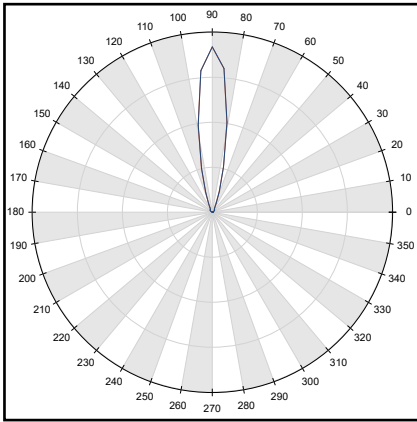
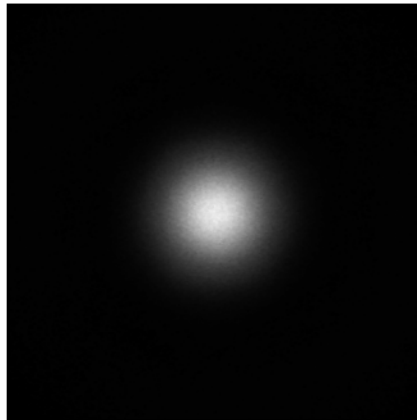
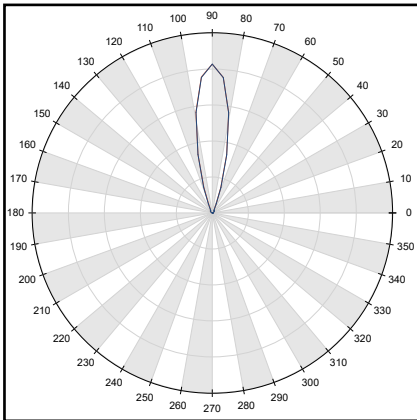


1. KESQ2145NASR - NICHIA® NVSU233B(U365)



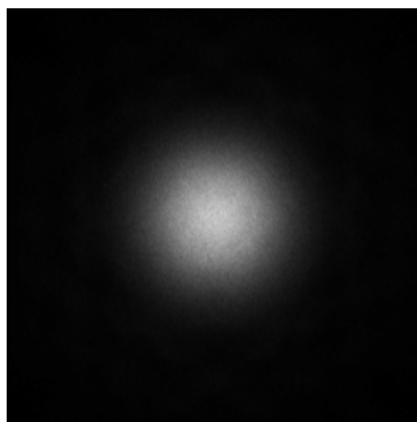
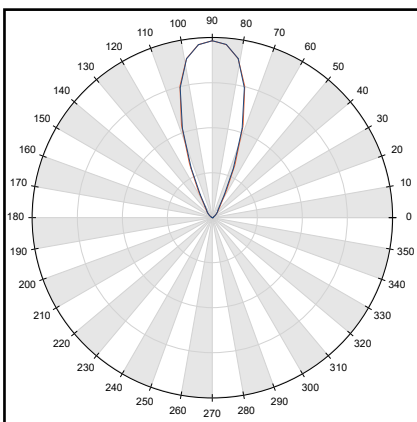
- Full angle C0-C180 at 50% from max: ~ 17.1°
- Full angle C0-C180 at 10% from max: ~ 28.9°
- The light spots here represented refer to tests carried out with ~ 1450mW@LED

1. KESQ2145MESR - NICHIA® NVSU233B(U365)



- Full angle C0-C180 at 50% from max: ~ 21.7°
- Full angle C0-C180 at 10% from max: ~ 41.9°
- The light spots here represented refer to tests carried out with ~ 1450mW@LED

1. KESQ2145WISR - NICHIA® NVSU233B(U365)



- Full angle C0-C180 at 50% from max: ~ 30.7°
- Full angle C0-C180 at 10% from max: ~ 58.2°
- The light spots here represented refer to tests carried out with ~ 1450mW@LED