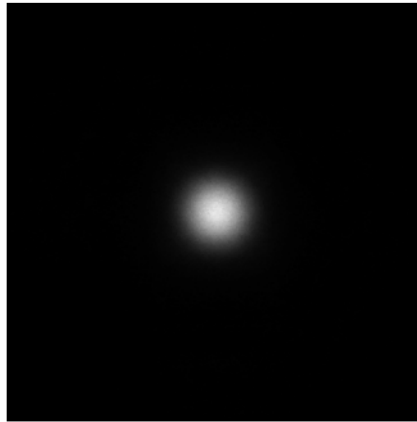
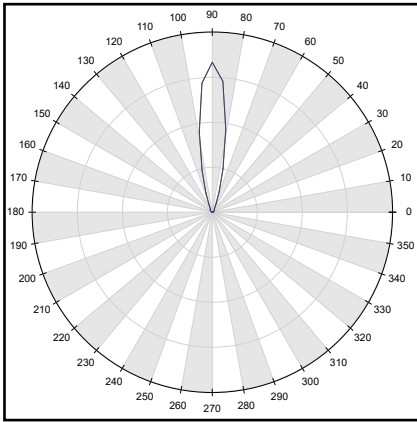
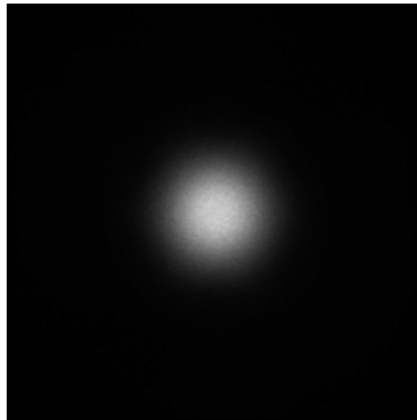
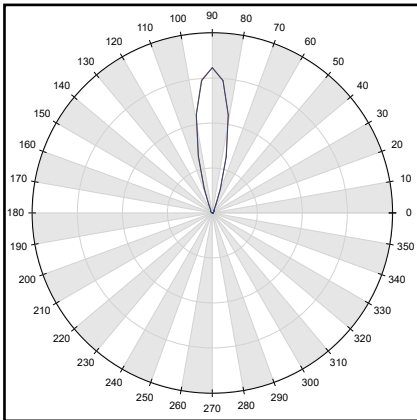


1. KESQ2145NASR - NICHIA® NVSU119CT(U395)



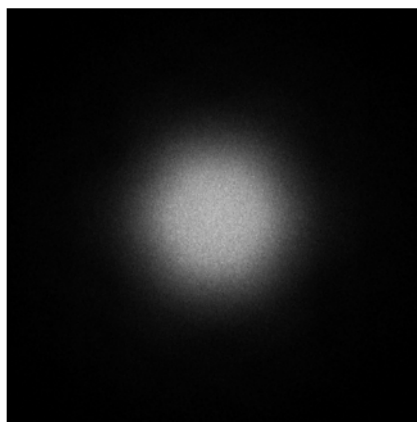
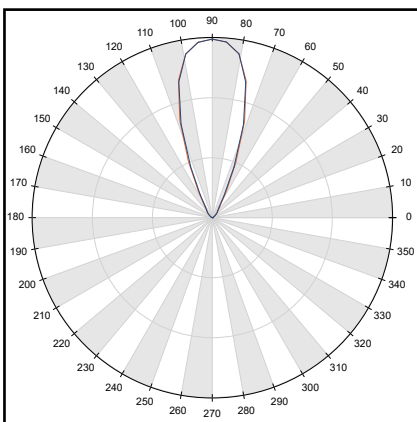
- Full angle C0-C180 at 50% from max: ~ 12.1°
- Full angle C0-C180 at 10% from max: ~ 23.1°
- The light spots here represented refer to tests carried out with ~ 1340mW@LED

1. KESQ2145MESR - NICHIA® NVSU119CT(U395)



- Full angle C0-C180 at 50% from max: ~ 23.1°
- Full angle C0-C180 at 10% from max: ~ 39.9°
- The light spots here represented refer to tests carried out with ~ 1340mW@LED

1. KESQ2145WISR - NICHIA® NVSU119CT(U395)



- Full angle C0-C180 at 50% from max: ~ 38.0°
- Full angle C0-C180 at 10% from max: ~ 60.8°
- The light spots here represented refer to tests carried out with ~ 1340mW@LED