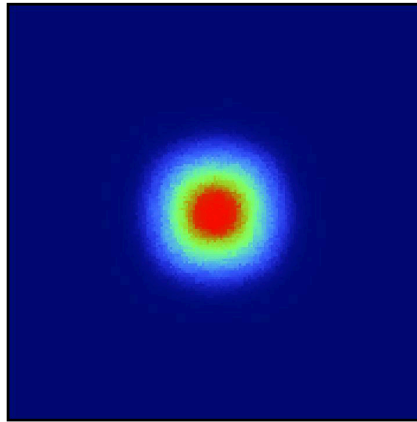
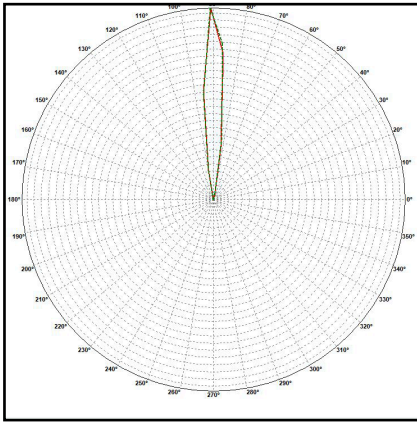
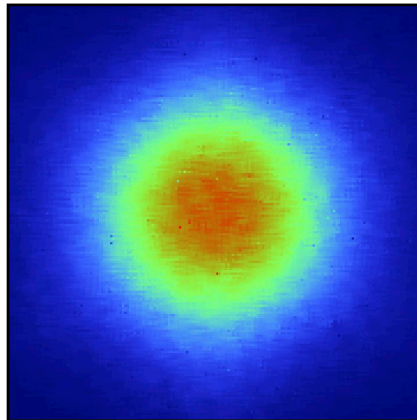
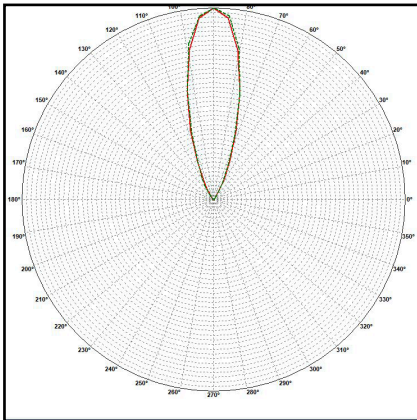


## 1. KESQ1169NAUV - LUXEON UV U



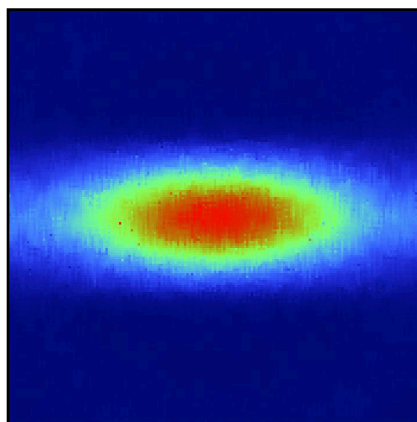
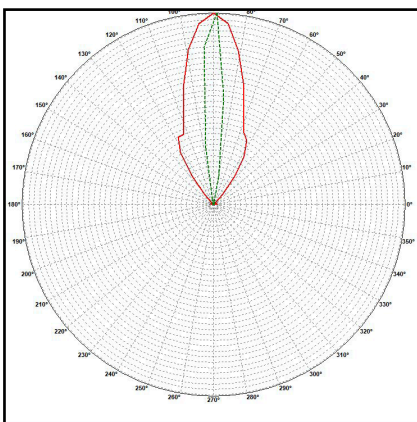
- Full angle C0-C180 at 50% from max:  $\sim 11.2^\circ$
- Full angle C0-C180 at 10% from max:  $\sim 21.1^\circ$
- The light spots here represented refer to tests carried out with  $\sim 808\text{mW@LED}$

## 1. KESQ1169WIUV - LUXEON UV U



- Full angle C0-C180 at 50% from max:  $\sim 30.1^\circ$
- Full angle C0-C180 at 10% from max:  $\sim 57.6^\circ$
- The light spots here represented refer to tests carried out with  $\sim 808\text{mW@LED}$

## 1. KESQ1169ELUV - LUXEON UV U



- Full angle C0-C180 at 50% from max:  $\sim 11^\circ \times 35^\circ$
- Full angle C0-C180 at 10% from max:  $\sim 21^\circ \times 79^\circ$
- The light spots here represented refer to tests carried out with  $\sim 808\text{mW@LED}$