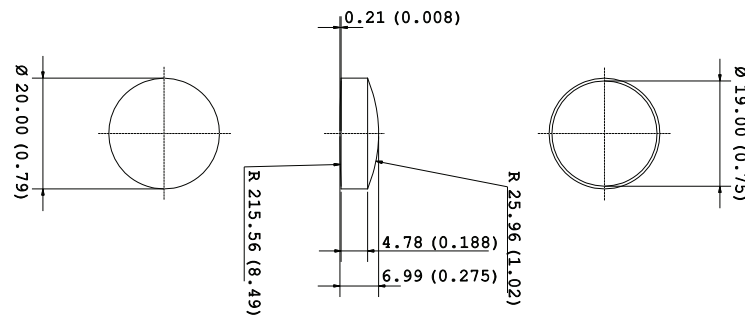


**KEB200 Biconvex Lenses Ø 20,00 mm.**

Code	KEB20001B	KEB20003B	KEB20004B	KEB20006B
Material	PC	PC IR	PMMA	PMMA UV
D (mm)	20,00	20,00	20,00	20,00
d (mm)	19,00	19,00	19,00	19,00
S (mm)	0,50	0,50	0,50	0,50
t (mm)	7,00	7,00	7,00	7,00
h (mm)	4,78	4,78	4,78	4,78
Lambda (nm)	550	850	550	380
EFFL (mm)	41,4	42,7	45,6	44,1
BFL (mm)	37,6	38,8	42,4	41,0



		PC	PC IR	PMMA	PMMA UV
Transmission Factor for transparent material	%	89	-	92	-
Refractive index		1.586	1.586	1.49	1.49
Haze for transparent material	%	< 0.8	-	< 0.5	< 0.5
Tensile modulus	MPa	2400	2400	3300	3300
Yeld stress	MPa	65*	65*	77**	77**
Yeld strain	MPa	6.0*	6.0*	5.5**	5.5**
Glass transition temperature	°C	145	148	117	117
Temperature of deflection under load (1.8 Mpa)	°C	124	125	98	98
Temperature of deflection under load (0.45 Mpa)	°C	137	137	103	103
Density	Kg/m3	1200	1200	1190	1190

\* 50 mm/min

\*\* 5 mm/min

## Geometric Tolerance

**t**       $t \pm 0,05\%$

**R**       $R \pm 3\%$

**D**       $D \begin{matrix} +0,00 \\ -0,1 \end{matrix}$

**EFFL**     $EFFL \pm 5\%$

**BFL**       $BFL \pm 5\%$