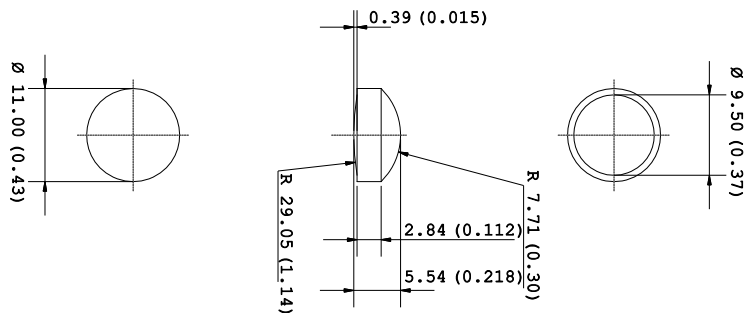


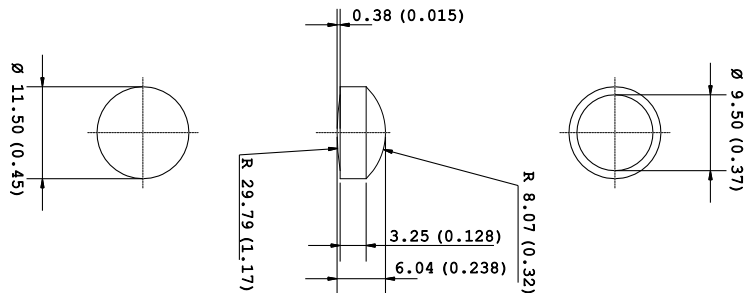
**KEB110 Biconvex Lenses Ø 11,00 mm.**

Code	KEB11001B	KEB11003B	KEB11004B	KEB11006B
Material	PC	PC IR	PMMA	PMMA UV
D (mm)	11,00	11,00	11,00	11,00
d (mm)	9,50	9,50	9,50	9,50
S (mm)	0,75	0,75	0,75	0,75
t (mm)	5,50	5,50	5,50	5,50
h (mm)	2,84	2,84	2,84	2,84
Lambda (nm)	550	850	550	380
EFFL (mm)	11,8	12,2	13,4	13,0
BFL (mm)	10,0	10,3	12,3	11,9



**KEB115 Biconvex Lenses Ø 11,50 mm.**

Code	KEB11501B	KEB11503B	KEB11504B	KEB11506B
Material	PC	PC IR	PMMA	PMMA UV
D (mm)	11,50	11,50	11,50	11,50
d (mm)	9,50	9,50	9,50	9,50
S (mm)	1,00	1,00	1,00	1,00
t (mm)	6,00	6,00	6,00	6,00
h (mm)	3,25	3,25	3,25	3,25
Lambda (nm)	550	850	550	380
EFFL (mm)	12,3	12,7	14,1	13,6
BFL (mm)	10,8	11,1	13,0	12,5



		PC	PC IR	PMMA	PMMA UV
Transmission Factor for transparent material	%	89	-	92	-
Refractive index		1.586	1.586	1.49	1.49
Haze for transparent material	%	< 0.8	-	< 0.5	< 0.5
Tensile modulus	MPa	2400	2400	3300	3300
Yeld stress	MPa	65*	65*	77**	77**
Yeld strain	MPa	6.0*	6.0*	5.5**	5.5**
Glass transition temperature	°C	145	148	117	117
Temperature of deflection under load (1.8 Mpa)	°C	124	125	98	98
Temperature of deflection under load (0.45 Mpa)	°C	137	137	103	103
Density	Kg/m3	1200	1200	1190	1190

\* 50 mm/min

\*\* 5 mm/min

## Geometric Tolerance

**t**       $t \pm 0,05\%$

**R**       $R \pm 3\%$

**D**       $D \begin{matrix} +0,00 \\ -0,1 \end{matrix}$

**EFFL**     $EFFL \pm 5\%$

**BFL**       $BFL \pm 5\%$